

| | | |
|---------|---|------------------------------|
| Date: | Trapani, 23 April 2024 | Document no.: 3. 2 |
| Object: | CoC Communication no. 2– DRIVERS BRIEFING | Time: 4:00 pm |
| From: | Clerk of the Course | Total Pages: 6 +3 Attachment |
| TO: | All Competitors/Drivers | |

BRIEFING FROM CLERK OF THE COURSE TO THE DRIVERS – CI SUPERCLIMB/CIVM/CIVSA/CI LE BICILINDRICHE

Good morning everyone and welcome also on behalf of the **Deputy Clerk of the Course**, from the **Organizer Automobile Club Trapani** and supported by **ASD Sicilia Promo Sport**, at the " **66^a Monte Erice** ", **National Race** valid for the **Championship Italian SUPER CLIMB** , season debut for their new series of excellence for the **CIVM** Italian Hill Climb Championship - Southern Zone, Italian Championship **Le Bicilindriche** , Sicilian Hill Climb Championship for Modern Cars and the "**9^a Historic Climb Monte Erice**" valid for the **CIVSA** Italian Hill Climb Championship for Historic Cars.

I recommend that, with this short written briefing, drawn up in compliance with art. 140 of the RSN 2024, to comply with the provisions that will be given to you .

The in-person briefing is mandatory as per **art. 4.2 "RDS" Hill Climb Sector Regulations 2024** and is scheduled for **26 April 2024 at Molino Excelsior, Via Simone Catalano n. 112 in Valderice (TP), at 06:00 pm CIVSA/CI Le Bicilindriche and at 07:00 pm for the CI SUPER CLIMB and CIVM** . Any absences from the Briefing will be sanctioned by the Stewards with a **fine of € 500.00** for each absent Driver who makes up the crew, **as required by the art. 140 of the "RSN" National Sporting Regulations 2024**.

Administrative Checks and Scrutineering

I inform you that:

- The passport issuing and Annual Technical Verification session will be carried out in person at Piazza Vittorio Emanuele in Trapani, **Thursday 04/25/2024 from 02:00 pm to 07:00 pm**.
- The Administrative Checks will be carried out in person at Piazza Vittorio Emanuele in Trapani, **on Friday 04/26/2024 from 09:00 am to 05:00 pm**. The documents, the original driving license (**no self-certification**) , the license, the medical certificate of suitability for sporting activity and anything else required for admission to participate in the race will be checked.
- The Scrutineering will be carried out in person at Piazza Vittorio Emanuele in Trapani, **on Friday 04/26/2024 from 09:30 am to 05:30 pm**. The Technical Scrutineers will compulsorily inspect all the cars and will collect the Annual Technical Certification, the Declarations of Conformity of Vehicle Safety Devices and Conformity of Safety Clothing for the **CIVSA** the HTP FIA or HTP ACI must be presented.
- The weighbridge will be located before the race in the Technical Checks area, Piazza Vittorio Emanuele in Trapani and after the race in the Erice Vetta Parc Fermè, Piazza Porta Trapani.
- The Tyres self-certification for groups **E2SS, E2SC, E1, TCR, TM-SC, TM-SS, E2SH, CN, GT**, as from **Art. 3.1.1 "RDS" Hill Climb Sector Regulations 2024**, **must** be delivered to the Commissioners in charge present at the Parc Fermé.

Official Notice Board

I inform you that the online official notice board, with all the official documents, will be available on the official website of the event: www.trapani.aci.it and on the **Sportity App** :



The list of those verified and admitted to the official practice will be published on **Friday 26/04/2024 at 08:30 pm** , the list of those admitted to **Race 1 (CIVM)** on **Saturday 27/04/2024 at the end of the 1st heat official practice at approximately 11:00 am**, the list of those admitted to **Race 2 (CIVM)** and **Race (CI LE BICILINDRICHE/CIVSA/CI SUPERCLIMB)** at the end of the **2nd heat official practice (CI LE BICILINDRICA/CIVSA/CI SUPERSALITA)** approximately at **07:00 pm**.

I ask you to pay close attention to any press releases that will be published in the online Official Notice Board

Program of the Event

Park Departure at **Valderice – Erice – SR 1 Immacolatella Erice Km. 1+120:**

Official Reconnaissance Practice/Race 1 : two heats **CI LE BICILINDRICHE** , **CIVSA** and **CI SUPERCLIMB** , one heat of official practice and **RACE 1** for the **CIVM**.

- Time Entrance to the Park of Departure: **Saturday 27 April 2024 at 07:30 am**
- Start: Valderice – Erice – SR 1 Immacolatella Erice Km. 1+200 at **08:00 am**

Competition: RACE 2 for the **CIVM** and RACE 1-2 for the **CI LE BICILINDRICHE**, **CIVSA** and **CI SUPERCLIMB**.

- Time Entrance to the Park of Departure: **Sunday 28 April 2024 at 07:30 am**
- Race Start: Valderice – Erice – SR 1 Immacolatella Erice Km. 1+200 at **08:00 am**

NB: The cars that, both in practice and in the race, show up out of alignment will not be started. The alignment will take place from the HIGHEST number to the LOWEST.

Paddock area

There is an absolute obligation for Competitors/Drivers to **respect** the spaces assigned to each driver, in order to facilitate the work of the other Paddock Staff, otherwise you may not be called in time!

Respect the directives given to you by the Race Officials, by doing so you will facilitate the passage of the other Competitors who must move within the Paddock and who will have to form a queue to be transferred to the starting line.

In the Paddock, pay extreme attention when driving, do not exceed a speed of **30 km/h** and do not carry out dangerous maneuvers of any kind.

Any infringements will be reported to the Stewards and the resulting disciplinary measures will be applied.

I remind you that for the **CI Super Climb (art. 33 RDS)**, it will not be allowed to keep civilian cars and trolleys inside the paddock.

Entry will be permitted, with a temporary pass, with civilian cars only for loading/unloading goods.

The organizers have made available special areas for parking civilian cars and trolleys at Viale Ignazio Buttitta and Via San Barnaba in Valderice, with shuttles for the journey to and from the Paddock from the aforementioned car parks. (attached 1 Car and trolley area plan).

Race route

Route information:

- **Start** from Valderice – Erice SR 1, Immacolatella Erice
- **Arrival** Viale delle Pinete - Erice
- **Length** path of 5,730 km
- **Height difference** m. 410
- **Slope** 7.05%
- **1 Chicane:** at Km. 3,550 from the start at Station 18, with entrance on the right consisting of three barriers



Alignment – Pre-Start Area

I ask you to respect the starting order that will be published at the end of the checks, making yourself available to the Marshals or service staff at least 10 minutes before your departure time.

However, I would like to remind you that during the race, cars that for any reason cannot start in their established order due to mechanical problems or other causes of force majeure recognized by the Clerk of the Course will be allowed to start.

I remind you that it **absolutely is forbidden** to proceed zigzagging to warm up the tyres, do not **accelerate** suddenly and do not **brake** suddenly. The maximum speed allowed is **30 km/h**.

Drivers who do not advance during the alignment phase of the cars **will not have granted them to take off**.

Any **infringement** detected by the Marshall will result in penalization by the Stewards.

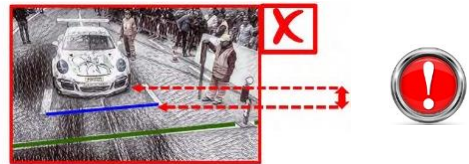
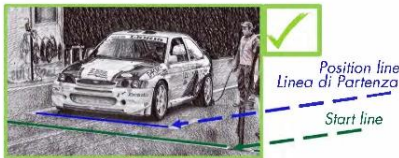
Official Reconnaissance Practices

I remind you that, to participate in the race, each Driver must have completed the entire route at least once, during the Official Reconnaissance Tests. In the absence of this requirement, the Driver may still be admitted to the race provided that in one of the **3 years** chronologically previous, has been classified in the race itself or is present in the list of those admitted and the race route has not changed by more than 10% , during the sporting verification you will have to sign a specific declaration (self-certification) which shows that you are in possession of the aforementioned requirements as per **art. 6 letter a) of the "RDS" Hill Climb Sector Regulations 2024, and art. 7.3 "RDS" Hill Climb Sector Regulations 2024 Historic Cars 2024.**

It is forbidden to carry out "Reconnaissance" of the route outside the day and time established by the Special Race Regulations.

Start

I recommend that you respect the **position line at the START** as indicated by the departure attendant, the most forward part of the car is the closest possible point to the **START line**.



I remind you that mechanics are not allowed access to the **START Area**, except for the cars of the **TCR, E1, E2 SH, GT, CN, CN-TCR, Supersalita Junior, TM SC-SS, E2SC, E2SS Groups, a maximum of two mechanics with a special PASS** provided by the Organizer. The mechanics are required to scrupulously respect the provisions of the Race Director.

The **START** occurs when the **green light turns on** at 30" (seconds) as per **art. 10 letter e) g) and p) of the "RDS" Hill Climb Sector Regulations 2024 and art. 7.3 "RDS" Hill Climb Sector Regulations 2024 Historic Cars.**

A Driver, already under starter's orders, may not be ready to start. In this case he may be allowed to start **with a delay of no more than 30" from the moment the green light comes on.** After this delay the driver will not be allowed to start and will be considered not to have started.

Starting Order and Conduct of Official Practice and Race

As per **art. 5.2 of the RDS Hill Climb Sector SUPER CLIMB 2024 and art. 7.3 of the "RDS" Hill Climb Sector Regulations 2024 Historic Cars**, the starting order of the cars for the official reconnaissance tests and for the race is as follows **in agreement with the Promoter:**

OFFICIAL RECONNAISSANCE PRACTICE/RACE 1: SATURDAY 27 APRIL 2024

There are two rounds of official practice for the **CI LE BICILINDRICHE, CIVSA and CI SUPERSALITA cars**, one round of official **PRACTICE and RACE 1** for the **CIVM** with the following starting order:

1st heat official practice park entrance departure at 07:30 am, departure at 08:00 am with this order:

- **CI LE BICILINDRICHE/CIVM/ CIVSA/CI SUPERCLIMB**

RACE 1 at the end of the 1st heat official practice of the CI LE BICILINDRICHE /CIVM/ CIVSA/CI SUPERSCLIMB with this order:

- **RACE 1 CIVM**

2nd heat official practice to follow in this order:

- **CI LE BICILINDRICHE/CIVM/ CIVSA/CI SUPERCLIMB.**

Order of departure 1st heat of official practice departs:

- 1) the cars admitted to the CI Le Bicilindriche;**
- 2) Cars admitted to the CIVM only:** Group RS-S, Group RS-S Plus, Group NS, Group AS, Group E1, Group E2 SH (no diesel classes), TM SC-SS Group;
- 3) the cars admitted to CIVSA;**
- 4) the cars allowed to the Championship Italian Superclimb:** RS Group, RS Plus Group, RS Cup Group, Rally Group, E1 Group, TCR Group, Group GT, Group E2 SH, Group Super climb Junior, Group CN, CN-TCR Group, Group E2 SC- SS.
- 5) interval**

Order of departure Race 1

- 6) Cars admitted to the CIVM only:** Group RS-S, Group RS-S Plus, Group NS, Group AS, Group E1, Group E2 SH (no diesel classes), TM SC-SS Group.



9ª SALITA STORICA MONTE ERICE
26-28 Aprile 2024



Order of departure 2nd heat of official practice departs:

- 7) the cars admitted to the CI Le Bicilindriche;
- 8) the cars admitted to CIVSA;
- 9) the cars allowed to the **Championship Italian Superclimb**: RS Group, RS Plus Group, RS Cup Group, Rally Group, E1 Group, TCR Group, Group GT, Group E2 SH, Group Super climb Junior, Group CN, CN-TCR Group, Group E2 SC- SS;
- 10) descent of the cars.

All starts will be given in descending order of number respecting the order of departure.

Practice will be given at 30" (seconds) except in special cases to be assessed by Race Direction.

The cars faulty but in degree Of DESCEND independently they will be able to fit in the "Convoy" in descent, between the **1st and 2nd run heat** from the official practice/ **Race 1**. The other cars they will come recovered come on tow truck.

During the Official Practices, however, the new start is not guaranteed as these are reconnaissance tests and not qualifying!

RACE 1-2: SUNDAY 28 APRIL 2024

I am scheduled: **RACE 2** for the CIVM and **RACE 1-2** for the CI LE BICILINDRICHE/ CIVSA/CI SUPERCLIMB with the following starting order:

Race 2 park entrance starting at 07:30 am, starting at 08:00 am with this order:

- CIVM

Race 1 at the end of Race 2 of the CIVM with this order:

- CI LE BICILINDRICHE/CIVSA/CI SUPERCLIMB

Race 2 to follow Race 1 with this order:

- CI LE BICILINDRICHE/CIVSA/CI SUPERCLIMB

Order of departure RACE 2:

1) **Cars admitted to the CIVM only:** Group RS-S, Group RS-S Plus, Group NS, Group AS, Group E1, Group E2 SH (no diesel classes), TM SC-SS Group.

Order of departure Race 1 and Race 2 :

INTERVAL between Race 1 and Race 2

- 2) the cars admitted to the CI Le Bicilindriche;
- 3) the cars admitted to CIVSA ;
- 4) the cars allowed to the **Championship Italian Superclimb**: RS Group, RS Plus Group, RS Cup Group, Rally Group, E1 Group, TCR Group, Group GT, Group E2 SH, Group Super climb Junior, Group CN, CN-TCR Group, Group E2 SC- SS.
- 5) descent of the cars.

The aforementioned intervals may be modified by the Race Director in the presence of particular environmental and/or technical situations.

The start of the Race will be given at 30" (seconds) except in particular cases which will be evaluated by the Race Direction.

For cars registered with CIVSA, as per RPG point 11, two intermediate time measurements are foreseen, the first measurement at Km. **1.63 from the start** and the second measurement at Km. **4.47 from the start**.

Stop along the Race Route

I recommend that you position the car safely and always follow the provisions of the Course Marshals, **dangerous maneuvers to bring the car back are strictly prohibited in roadway And take up again there departure , it is strictly forbidden to drive a car through or in the opposite direction to the direction of the race, unless it is done on the orders of the Marshals or the Clerk of the Course, (art. 8 second paragraph of the 2024 Italian Superclimb and CIVM Championship Regulations and art. 7.3 RDS HILL Climb Historic Cars 2024).**

Remain in the close from the station radio closer to the place of the stop.

I remember That, in case Of stop long The path, And possible take up again there gear Alone **on express authorization from the Direction Competition and And absolutely prohibited make interventions mechanics!**

The offenders they will be liable of sanctions from part of the Stewards.

Cars stopped along the route, in order to descend, **MUST** queue up with the 'Convoy' on the descent.

Signal Flags

Along the entire course of the race, the Marshals are equipped with signal flags, strictly comply with the signals, it is valid for their own safety, that of the other pilots and of the service personnel.

Failure to comply with the reports given by the Marshals is reported to the Stewards for the application of penalties and/or sanctions, as provided for by the Sporting Regulations which can go as far as DISQUALIFICATION.

I remember that only and only the display of the **RED Flag (interruption of the race, stop IMMEDIATELY)** can give the possibility of a new start.

You are therefore invited to observe the display of the **Flags**:



RED: immediate and absolute stop signal.



YELLOW FLAG MOTIONLESS: danger signal, absolute prohibition of overtaking.



YELLOW FLAG WAVED: signal of imminent danger Drivers must slow down.



DOUBLE YELLOW FLAG: serious danger signal Drivers must slow down and be ready to stop.



YELLOW FLAG with RED STRIPES: signaling worsening grip on the road surface due to presence of water or oil.



BLU: signals a driver that they are catching up or overtaking him.



BLACK AND WHITE CHEQUERED: end of the race session "FINISH LINE".

Park Fermè

I remind you that between **Race 1** and **Race 2** the "Park Fermè" regime applies, **the Competitors to be classified they must obligatorily drive the cars into the Parc Fermé** which will be set up:

- Erice Vetta, Piazza Porta – Trapani.

I also remind you that it is strictly **forbidden to carry out mechanical interventions** and **park** inside the **Parc Fermé** inside of. Any **infringement** detected by the Marshall will result in penalization by the Stewards.

Return to the Paddock - Convoy

I remind you **that in compliance with the "RDS" Hill Climb Sector Regulations 2024 and "RDS" Hill Climb Sector Regulations 2024 Historic Cars, during their descent and strictly prohibited transport other people and cars on board the racing car they must be driven only by drivers.**

All the drivers, even those of the touring cars, they must **wear during the descents, belts, and clothing protective**, otherwise they will be punished financially and/or with other sanction stability by the Stewards.

The use of a helmet is **mandatory** for all cars open to themselves conditions of which above.

Keep to **the right lane, do not stop on the racecourse** and return to the Paddock as soon as possible.



9ª SALITA STORICA MONTE ERICE

26-28 Aprile 2024



SPORT



Automobile Club d'Italia
SPORT
Delegazione Sicilia



Overtaking, dangerous driving behavior (such as speeding), skidding and similar maneuvers will be **severely punished**.

Any **infringement** detected by the Marshals will result in penalization by the Stewards; the sanction will be established by the College of Stewards.

So, lend their maximum attention at reports of the Marshals along the route.

Protective Clothing and Safety Devices

I also remind you, as required by the International and National Regulations, all those who are found not to comply with International or National Regulations, in relation to clothing or safety devices, will be excluded from the Race and referred to Sports Justice as per **RDS/NG Hill Climb Sector Regulations 2024, RDS/NG Hill Climb Sector Regulations Historic Cars 2024**.

Fuel

The Panta company is the official supplier of the compulsory petrol in the CI SUPERCLIMB and CIVM races.

Fuel orders must be forwarded by the Competitor directly to the supplier, who will deliver the ordered product.

There is no sale on the competition grounds.

The verification of the petrol used will be carried out in accordance with the requirements of **Appendix 5 to the National Sporting Regulations 2024**.

Respect the Environment

We are guests of the territory, it is therefore our duty to respect the environment and guarantee environmental sustainability. Do not leave waste of any kind in the used areas, especially special waste (tyres, batteries, oil/petrol containers, car parts, etc.) which must be carefully disposed of by you.

Prize Giving

The prize-giving ceremony will take place on **Sunday 28 April 2024 at Erice Vetta, Piazza Porta Trapani near the Parc Fermé, after the expiry of the deadline for protests**, governed by Chapter XVIII of the National Sporting Regulations 2024 as partial integration of art. 214 of the National Sporting Regulations 2024, for Race 1 and Race 2, protests against the non-conformity of the cars and/or against the Classification must be presented **within 30 minutes from the display of the Group Overall Classification** signed by the Clerk of the Course.

For **Historic Car Hill Climb competitions**, complaints are governed by **Article 10 Normal Regulation 2024**. Complaints and appeals must be presented in the manner, form and terms established by the National Sporting Regulations 2024. In the event of a technical complaint, the complainant must specify the details of the vehicle which is the subject of the complaint and is required to provide all the documentation relating to the complaint itself.

I wish sincere good luck to all the participants and remember that for every need I am at your disposal, together with the Deputy Clerk of the Course and the Competitors Relations Officers, at the Race Direction or at the start.

The Clerk of the Course
Fabrizio Fondacci



- ATTACHMENTS: 1. CAR AND TRUCK AREA PLAN
2. PLANIMETRY OF THE ADMINISTRATIVE AND TECHNICAL CHECKS AREA
3. LAYOUT OF THE RACE ROUTE

Published on the Dital Notice Board on 23 April 2024 at 4:00 pm

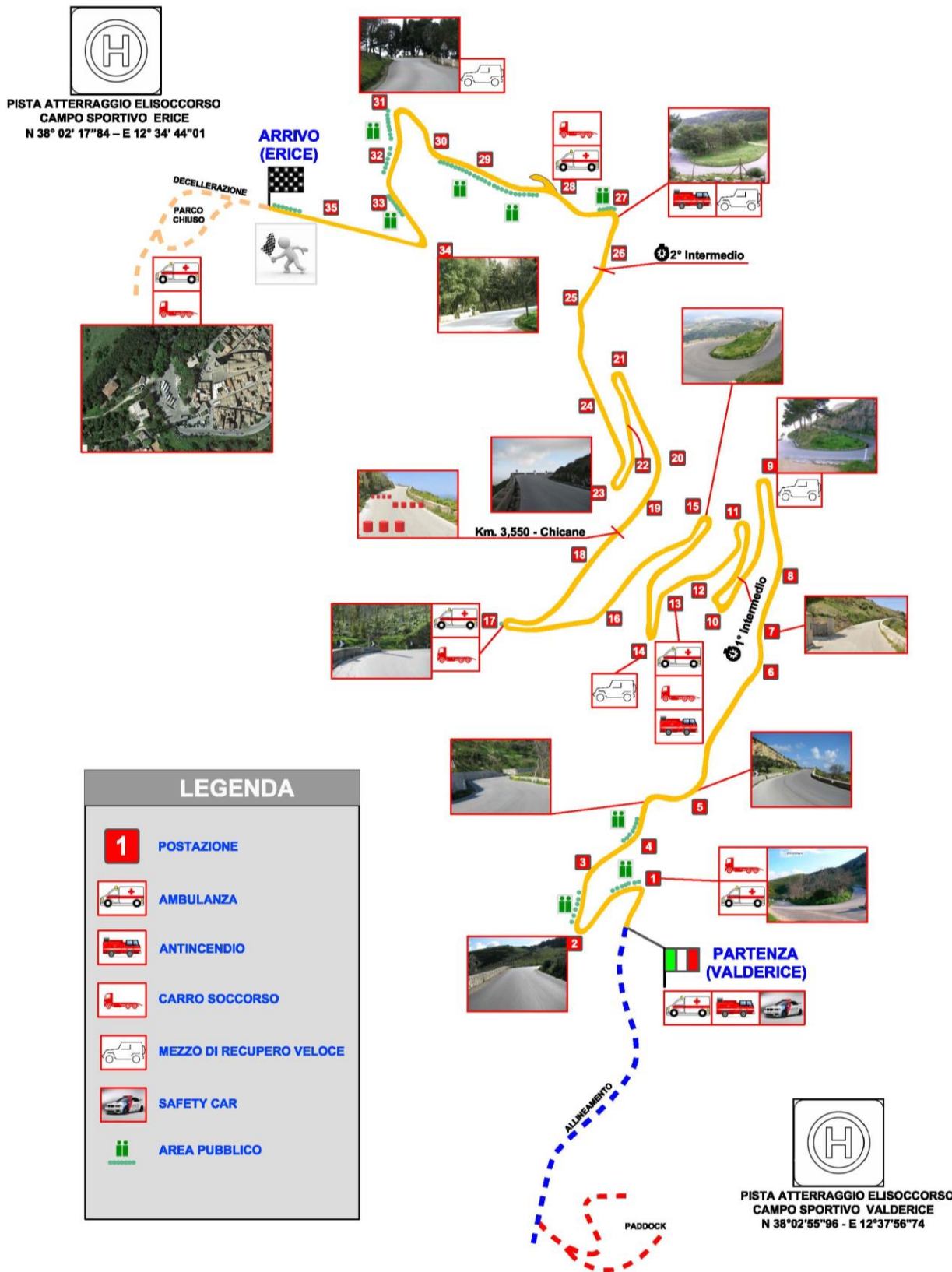
ATTACHMENT 1



ATTACHMENT 2



PERCORSO MONTE ERICE



LEGENDA

- 1** POSTAZIONE
- AMBULANZA
- ANTINCENDIO
- CARRO SOCCORSO
- MEZZO DI RECUPERO VELOCE
- SAFETY CAR
- AREA PUBBLICO